


MONARCH

Data Pump

10.5

Data Migration Made Easy.™

Business Intelligence

Automated ETL, Data Integration & Information Delivery— Without Programming

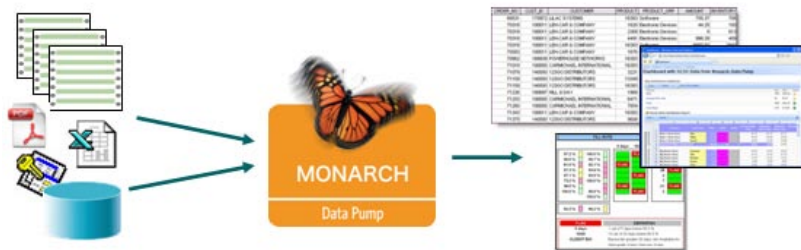
Monarch Data Pump is a server-based data distribution, ETL (Extraction, Transformation, Loading) and data integration solution that automatically creates and delivers the right information, at the right time, in the right format—across your organization—at a fraction of the cost and time of traditional Business Intelligence solutions.

Unlike other software tools, Monarch Data Pump automatically accesses and transforms unstructured data sources, such as report files and PDF files into live, customized data in various formats, including Excel® without programming. Monarch Data Pump also easily accesses and combines data from enterprise databases such as SQL Server, Oracle™ and DB2™; Excel, Access, as well as PDF, XPS and CSV files, and much more.

Other data integration and information delivery solutions typically ignore existing reports as a data source, and require you to rebuild your reports from scratch, or program complex data processing and mapping of data fields from one raw database table to another. In contrast, the programming-free data integration capabilities of Monarch Data Pump significantly reduce IT burden, and provide the customized data needed, at an unmatched cost and level of simplicity.

Monarch Data Pump automatically produces customized data in myriad formats, without programming, for a variety of enterprise uses, including:

- Enterprise report distribution
- Data integration between applications and data ETL (for data marts and warehouses)
- Data export for use with Microsoft SharePoint® libraries and KPIs
- Text files sent to a document archive



Monarch Data Pump V10.5 uniquely mines and transforms existing reports and other data sources into customized data for enterprise data integration and information delivery, with no programming, at a cost and simplicity no traditional solution can match.

Key Features

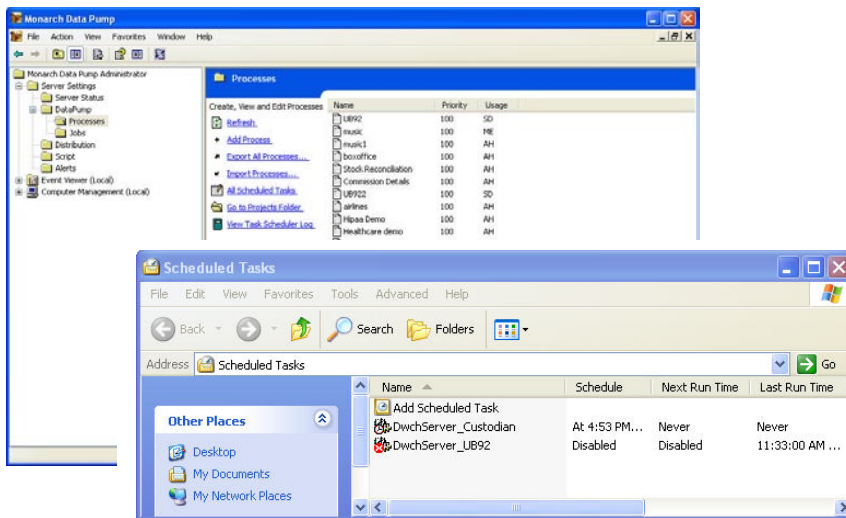
- Mines, customizes and exports data automatically from existing reports (text, PDF or XPS format) and other data sources into customized data
- Enables programming-free Excel enterprise reporting and other enterprise information delivery
- Provides ETL for data marts/warehouses as well as data integration between applications far easier and less expensively than traditional solutions
- Integrates enterprise data with Microsoft SharePoint without complex database programming
- Delivers data via email, OLE DB/ODBC, network folders, RSS, FTP, SharePoint libraries and more
- Monarch Data Pump Professional Version offers higher-volume data production (up to 32 CPUs), remote web administration, web services interface and tight integration with Microsoft SQL Server Integration Services

Report & Excel Distribution Made Easy—And Compliant Too!

For companies that distribute reports on a regular basis, either internally and/or externally, using Monarch Data Pump saves money on distribution costs, makes users more productive and reduces compliance issues. Monarch Data Pump can automatically deliver corporate reports on a scheduled or event-driven basis in the format users want (Excel), along with the original report source (if so desired) for viewing and auditing within the same Excel file. Digital Signatures can be added for maximum data integrity.

Excel spreadsheets can be sent via email or RSS feeds. Monarch Data Pump provides numerous Excel output options including exporting Excel pivot tables; bursting Excel summary data views—with subtotals and grand totals saved as Excel formulas; exporting Office 2007 OpenXML Spreadsheets (xlsx, xlsxm) ; and much more.

In addition to creating, refreshing and adding new data into Excel spreadsheets, templates and Access databases, Monarch Data Pump can export customized data such as PDF files, other database files, HTML and more.



The Monarch Data Pump management console makes it easy to create new processes, set scheduled run times, export processes for transfer to other instances of Data Pump and much more. Process can be set up to run according to a schedule or via monitoring a directory for new files.

Data Visualization Made Easy and Faster!

The biggest barrier to successfully implementing BI tools such as dashboards is accessing, aggregating, transforming and delivering the data from multiple sources of data including ERP solutions, legacy systems and third party sources. Monarch Data Pump is your fast lane to getting the data you need from any or all of these different sources by leveraging current system output such as reports and PDF files, thereby eliminating most, if not all, of the need to directly access any databases.

As an added bonus, the report data that Monarch Data Pump provides typically contains the very measures that you need to successfully create the right Key Performance Indicators (KPIs) in your dashboards, further speeding your project.

Monarch Data Pump is available in specially priced combo packages with Datawatch Dashboards, our fully interactive web-based dashboard solution that allows users to visualize data in over 60 stunning graphical chart types including dials, gauges, stop lights and more in a web browser. The combination of Monarch Data Pump and Datawatch Dashboards makes

Export Formats:

- OLE DB/ODBC Data Sources (e.g. MS SQL Server, Oracle, DB2)
- Excel 3.0, 4.0, 5.0 and 8.0 (xls)
- Office 2007 OpenXML Spreadsheet (xlsx, xlsxm)
- Access 1.0, 1.1, 2.0, 3.0, 4.0 (mdb)
- Access 2007 (accdb)
- PDF
- dBASE III, IV, and 5.0 (dbf)
- Paradox 3.x, 4.x, 5.x and 7.x (db)
- IBM® Lotus® Lotus 1-2-3 (wk3)
- Fixed length and delimited text
- HTML
- Monarch Portable Report File (PRF)

System Requirements

Hardware

- Pentium 4 single core or better processor
- 2 GB or more RAM
- 250 MB hard drive space
- Additional hard drive space for temporary files created during processing (this is dependent on the size of input files processed and may be up to 8GB)

Operating System

- Windows™ XP Professional SP3 or later
- Windows 2003 Server SP2 or later
- Windows Vista
- Windows Server 2008
- Windows 7

Database Software

- SQL Server 2008 Express SP1 (provided with Monarch Data Pump)
- SQL Server 2000 SP3A or later (SQL Server 2005+ strongly recommended)

it easy for all levels of users to get a visual overview of operational performance as well as it provides the ability to monitor specific business processes and events.

Data Access and Integration Made Easy

Monarch Data Pump serves as a simple, yet powerful data integration tool to create, append, update or overwrite databases such as Microsoft SQL Server, Oracle and DB2 via OLE DB. Monarch Data Pump transforms existing trusted, audited report output into customized data, allowing IT departments to avoid the complex database programming, data access and data quality issues typical of most traditional data integration solutions.

Monarch Data Pump can also export customized data to CSV or other import-friendly formats facilitating transfer of data from one application to another. Using reports as a data source means no discovery of underlying data structures and business rules, complex mapping or programming. Monarch Data Pump makes data integration between disparate systems a snap and eliminates information "silos" across the enterprise.

SharePoint Integration Made Easy

Monarch Data Pump offers direct integration with Microsoft SharePoint, particularly with the Microsoft Office SharePoint Server (MOSS) 2007.

Monarch Data Pump can access files from SharePoint document libraries as well as populate them with customized Excel spreadsheets and other file formats. Monarch Data Pump also leverages its support for the Office 2007 Open XML Spreadsheet (xlsx) format, in conjunction with Excel Services, to easily facilitate web-enabled KPI reporting capabilities within MOSS 2007, resulting in programming-free SharePoint business intelligence.

Get Your Enterprise Working Smarter!

Monarch Data Pump uniquely mines and transforms existing reports and other data sources into actionable, customized data across your organization, in an easily administered, automated system.

Monarch Data Pump is offered in both standard and professional versions. Monarch Data Pump Pro offers higher-volume data production, with support for multiple CPUs from 2 to up to 32 CPUs, plus tight integration with Microsoft SQL Server Information Services (SSIS), remote web administration and a web service interface.

Contact Datawatch today to learn more about all of the information delivery, data integrity, data sources and administrative capabilities available to you in Monarch Data Pump V10.5!

Datawatch Corporation

Datawatch Corporation (NASDAQ-CM: [DWCH](http://www.datawatch.com)), a leader in Business Intelligence (BI) helps companies make better decisions and solve business problems by simplifying access to and analysis of information. Unique among BI vendors, Datawatch transforms the massive amounts of data and documents generated inside or outside a company into actionable insight, without any changes needed to existing systems. Datawatch customers benefit from the right information, in the right context, at the right time. More than 40,000 organizations worldwide rely on Datawatch products including its market-leading Monarch report and data mining solutions. Founded in 1985, Datawatch is based in Chelmsford, Mass., with offices in London, Sydney and Manila. For more information, visit www.datawatch.com.



www.datawatch.com